

*heartsoul*



spring 2022



# heartsoul

- 4 new color
- 6 new styles for spring
- 8 fashionable favorites
- 10 tops
- 11 pants
- 12 jackets & lab coat
- 14 prints
- 20 bags
- 22 socks
- 24 size chart & fit guide
- 25 print & style index,  
color abbreviations
- 26 matrixes

Spring takes a sophisticated turn with new styles, colors, and silhouettes that lend an easy, pulled-together look to any ensemble.

New hue Berry Blast makes its debut, as does the Pink Party Polka Dot peplum cardigan and coordinating top and pant. Kawaii style is strong this season, with two new Hello Kitty® print tops, one with matching Soul Support socks.

Also on deck for spring: the Forever Wild At Heart animal print, available in a top and jacket that folds into its own pocket bag.

On the cover: Model is wearing the HS828 top in PEWH with the HS228 pant in PEWH and carrying the Madison Duffle in BLKCA. On right: Model is wearing HS185 pant in BRYH and carrying the Harper Utility bag in RBLOV.





HS797 reorderable top in CILH, BCKH, NAYH, WINH, PEWH & ROYH.



Hello Kitty® prints HS821 HKRW & HS714 HKIV.





Model is wearing 20710 top and HS185 pant in BRYH.  
On right: Model is wearing the HS185 pant in BRYH.



## new color

new color  
BRYH

### 20710

shaped  
v-neck top

sizes: XXS-3XL\*  
length: 25½"

fabric: 95 poly/  
5 spandex fine  
dobby



BCKH	BRYH	CABH
CILH	EGPH	ESP
GLFH	GLXH	GRP
GRXH	HUNH	NAYH
PEWH	PNKH	RBGR
RDHH	ROYH	TEAH
TURH	WHIH	WINH

#### style features:

- contemporary fit
- three pockets: two patch pockets, inside pocket on right
- hidden functional pink grommet & bungee loop for headphone cords
- exterior pink bungee loop
- front & back princess seams
- double-needle topstitching
- side vents



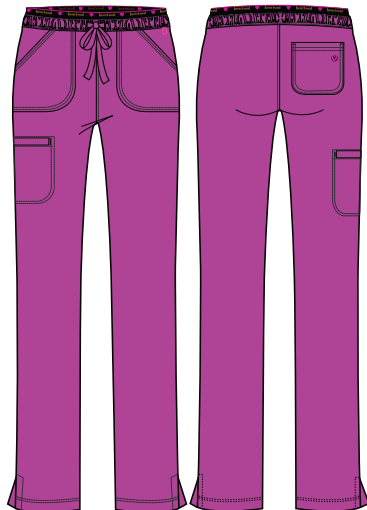
new color  
BRYH

### hs185/p/t

drawstring pant

sizes: XXS-3XL\*\*  
inseam: 30½"  
[p] XXS-2XL (28")  
[t] XS-2XL (33½")

fabric: 95 poly/  
5 spandex fine  
dobby



BCKH	BRYH	CABH
GLXH	NAYH	PEWH
RBGR	ROYH	WHIH
WINH		

- contemporary fit
- logo elastic waistband
- pink bungee ID badge loop at waist
- four pockets: two front pockets, welt cargo pocket, back pocket
- side vents
- tapered leg, 14" opening

all colors are core except BRYH & RBGR

\*fashion colors available in XS-3XL

\*\*fashion colors available in XS-3XL, XS-2XL (p).





**fresh styles in new  
hue Heather Grey**



Heather Grey makes its Heartsoul debut in brand-new styles for spring 2022, which looks amazing paired with our Pink Party Polka Dot print and popular core colors.



# new styles

new style

## hs815

zip y-neck top

sizes: XS-3XL  
length: 25"

fabric: 95 poly/  
5 spandex fine  
dobby



HTGR



### style features:

- contemporary fit
- gold zipper at neckline with gold heart charm zipper pull
- two pockets: chest pocket & side seam zip pocket with gold zipper pull
- curved back yoke
- shirttail hem
- tuckable top
- pink party polka dot (PKPD) printed neck facing

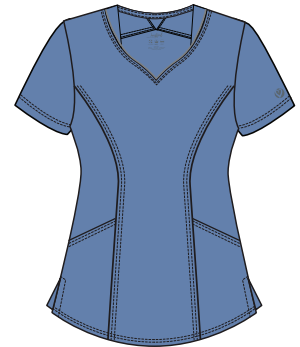
new style

## hs797\*

v-neck top

sizes: XXS-3XL  
length: 26"

fabric: 95 poly/  
5 spandex fine  
dobby



BCKH CILH NAYH  
PEWH ROYH WINH



\*reorderable

### style features:

- contemporary fit
- stylized sweetheart neckline
- two angled pockets
- front and back princess seams
- back yoke seam with triangle inset at center
- rounded hem
- side vents

new style

## hs215

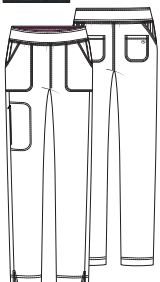
mid rise  
pull-on pant

sizes: XS-3XL  
inseam: 30½"

fabric: 95 poly/  
5 spandex fine  
dobby



HTGR



### style features:

- contemporary fit
- elastic-reinforced waistband
- five pockets: two front pockets, in-seam zip cargo pocket with gold zipper pull, two back pockets
- rib-knit insets at side panels
- front leg seams with vents at hem
- straight leg, 15" opening
- pink party polka dot (PKPD) printed interior waistband

new style

## hs380

open front  
peplum cardigan

sizes: XS-3XL  
length: 25½"

fabric: 95 poly/  
5 spandex printed  
jersey knit



PKPD  
pink party  
polka dot



### style features:

- contemporary fit
- fold-over shawl collar
- two pockets
- front princess seams
- all-around waist seam
- peplum hem





Model is wearing the HS336 cardigan in NAYH with HS228 pant in PEWH.  
On right: model is wearing the HS828 top in PEWH.



# fashionable favorites

## hs828

zip-front top

sizes: XS-3XL  
length: 25"

fabric: 95 poly/  
5 spandex fine  
dobby



**BCKH PEWH**



### style features:

- contemporary fit
- shaped v-neck
- gold zipper and signature logo zipper pull
- two hidden in-seam zip pockets with gold zipper pulls
- angled front yoke seams
- front & back princess seams
- all-around waist seam
- rounded hem

## hs336

open front  
peplum cardigan

sizes: XS-2XL  
length: 25½"

fabric: 53 cotton/  
43 rayon/  
4 spandex jersey knit



**BCKH NAYH**



### style features:

- contemporary fit
- fold-over shawl collar
- two pockets
- front princess seams
- all-around waist seam
- peplum hem

## hs228

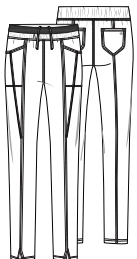
mid rise pull-on  
pant

sizes: XS-3XL  
inseam: 31"

fabric: 95 poly/  
5 spandex fine  
dobby



**BCKH PEWH**



### style features:

- contemporary fit
- all-around elastic waistband with interior drawstring
- mesh design elastic on front of waistband
- four pockets: two front pockets, two back pockets
- center front vents
- tapered leg, 13½" opening





# tops

## hs672

knit tee

sizes: XS-2XL  
length: 25"

fabric: 95 cotton/  
5 spandex printed  
jersey knit



### style features:

- contemporary fit
- round neckline
- long sleeves with cuffs
- shirttail hem
- mix and match with prints and solids

## hs660

v-neck top

sizes: XXS-3XL  
length: 26½"

fabric: 95 poly/  
5 spandex fine  
dobby



### style features:

- contemporary fit
- three pockets: two patch pockets with pen slots, side seam zip pocket
- instrument loops above left pocket
- rib-knit yokes & neckband
- front & back princess seams
- heart heat transfer & heart grommets
- side vents

## hs765

split neck top

sizes: XXS-3XL  
length: 26"

fabric: 95 poly/  
5 spandex fine  
dobby



### style features:

- contemporary fit
- rib-knit insets at neckline
- three pockets: two front pockets, layered pocket on left
- hidden functional pink grommet inside left pocket for headphone cords
- rib-knit front hem
- front & back princess seams
- side vents

## hs710

shaped  
v-neck top

sizes: XXS-3XL  
length: 26"

fabric: 95 poly/  
5 spandex fine  
dobby



### style features:

- contemporary fit
- two pockets: chest pocket, hidden in-seam zip pocket
- front & back princess seams
- high-low shirttail hem
- side vents
- tuckable top

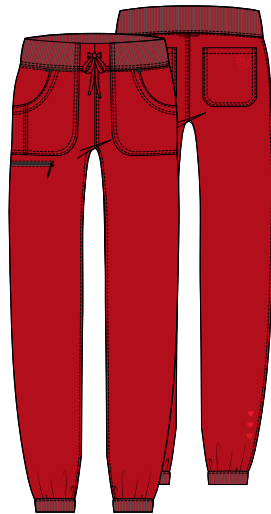
# pants

## hs030/p/t

jogger

sizes: XXS-3XL  
inseam: 29"  
[p] XXS-XL (26½")  
[t] XS-XL (32")

fabric: 95 poly/  
5 spandex fine  
dobby



### style features:

- contemporary fit
- lower rise
- five pockets: two front pockets, accessory pocket, zip cellphone pocket, two back pockets
- rib-knit covered elastic waistband with drawstring
- locker loop
- heart heat transfers
- rib-knit cuffs
- tapered leg, 10½" opening

BCKH	CABH	CILH
EGPH	GLXH	NAYH
PEWH	RDHH	ROYH
TEAH	WINH	

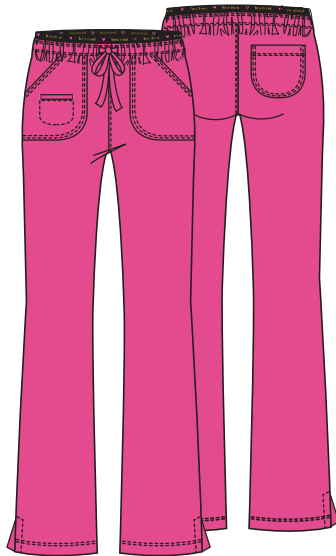


## 20110/p/t

drawstring pant

sizes: XXS-3XL  
inseam: 30½"  
[p] XXS-2XL (28")  
[t] XS-2XL (33½")

fabric: 95 poly/  
5 spandex fine  
dobby



### style features:

- contemporary fit
- lower rise
- logo elastic waistband
- four pockets: two front patch pockets, welt pocket with pink bartacks, back pocket
- exterior pink bungee loop at waist
- side vents
- flare leg, 19" opening

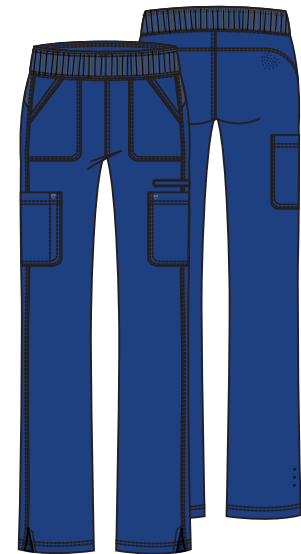
BCKH	CABH	CILH
EGPH	ESP	GLFH
GLXH	GRP	GRXH
HUNH	NAYH	PEWH
PNKH	RDHH	ROYH
TEAH	TURH	WHIH
WINH		

## hs020/p/t

pull-on cargo  
pant

sizes: XXS-3XL  
inseam: 30½"  
[p] XXS-2XL (28")  
[t] XS-2XL (33½")

fabric: 95 poly/  
5 spandex fine  
dobby



### style features:

- contemporary fit
- lower rise
- rib-knit covered elastic waistband
- five pockets: two front pockets, two cargo pockets, welt pocket
- pen slot on right cargo pocket
- rib-knit back yoke
- heart heat transfers & heart grommets
- side vents
- straight leg, 17" opening

BCKH	NAYH	PEWH
ROYH		





Model is wearing the 20402 lab coat in WHIH and carrying the Harper Utility bag in BLKBM.



# jackets

## 20310

warm-up jacket

sizes: XS-3XL  
length: 24½"

fabric: 95 poly/  
5 spandex fine  
dobby



BCKH	CABH	CILH
GLXH	HUNH	NAYH
PEWH	PNKH	RDHH
ROYH	TEAH	WHIH
WINH		

### style features:

- contemporary fit
- front-zip closure
- three pockets: two patch pockets (left with pink bungee loop), welt pocket with pink bartacks
- hidden functional pink grommet inside left pocket & bungee loop at neckline for headphone cords
- front & back princess seams
- elastic binding at sleeve hems
- detachable hood

## hs315

warm-up jacket

sizes: XS-3XL  
length: 27"

fabric: 95 poly/  
5 spandex fine  
dobby



BCKH	NAYH	PEWH
------	------	------

### style features:

- contemporary fit
- front zip closure
- two set-in pockets
- pink bungee loop inside collar for headphone cords
- rib-knit elbow & side panels
- front & back yokes
- front & back princess seams
- rib-knit cuffs with thumbholes
- high-low shirttail hem
- heart heat transfer & heart grommet detail

## 20402

lab coat

sizes: XS-2XL  
length: 34"

fabric: 95 poly/  
5 spandex fine  
dobby



WHIH
------

### style features:

- contemporary fit
- button front closure with heart-embossed buttons
- three pockets: two front welt pockets, interior pocket
- grommet for headphone cords inside left pocket
- bungee ID badge loop on left pocket
- front and back princess seams
- grosgrain ribbon over front princess seams
- back waist seam
- elastic binding at sleeve hems

## hs500

vest

sizes: XS-3XL  
length: 25"

fabric: 95 poly/  
5 spandex fine  
dobby



BCKH	NAYH	PEWH
------	------	------

WHIH
------

### style features:

- contemporary fit
- zip front closure with logo zipper pull
- removeable hood with drawstring
- pink bungee loop inside collar for headphone cords
- four patch pockets
- front & back yokes
- rib-knit hem, side & back panels
- heart heat transfer & grommet detail





HELLO KITTY®



## new prints

### hs821 hkrw

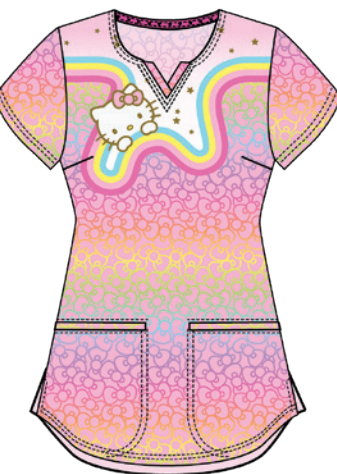
retro rainbow

sizes: XXS-3XL

length: 26"

fabric: 95 poly/  
5 spandex poplin

coordinating colors:



style features:

- two welt pockets
- high-low hemline



### hs714 hkiv

kawaii vacation

sizes: XXS-3XL

length: 26"

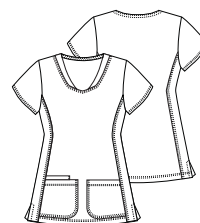
fabric: 95 poly/  
5 spandex fine  
dobby

coordinating colors:



style features:

- three pockets: two patch pockets, interior pocket
- pink party contrast





## new prints

### hs329 fwah

forever wild  
at heart

sizes: XS-3XL  
length: 23½"

fabric: 95 poly/  
5 spandex fine  
dobby



coordinating colors:



style feature:

- entire jacket packs into the pocket bag



### part cheetah, part kangaroo

Our all-new animal print  
jacket folds into its own  
space-saving pouch.



### hs800 fwah

forever wild  
at heart

sizes: XS-3XL  
length: 26"

fabric: 95 poly/  
5 spandex fine  
dobby



coordinating colors:



style features:

- chest pocket
- tuckable top

## new prints

### hs720 rwbm

rainbow blossoms

sizes: XXS-3XL  
length: 26"

fabric: 95 poly/  
5 spandex fine  
dobby



coordinating colors:

<b>BCKH</b> black	<b>BRBY</b> berry blast	<b>PEWH</b> pewter
<b>PNKH</b> pink party	<b>TURH</b> turquoise	<b>WHIH</b> white

style features:

- three pockets: two patch pockets, interior pocket
- black and white side bands



### hs643 lvtd

loving tie dye

sizes: XXS-3XL  
length: 26"

fabric: 95 poly/  
5 spandex poplin



coordinating colors:

<b>BCKH</b> black	<b>PNKH</b> pink party	<b>WHIH</b> white
----------------------	---------------------------	----------------------

style features:

- three pockets: two patch pockets, interior pocket



### hs821 plpp

pineapple pop

sizes: XS-3XL  
length: 26"

fabric: 95 poly/  
5 spandex fine  
dobby



coordinating colors:

<b>BCKH</b> black	<b>BRBY</b> berry blast	<b>PEWH</b> pewter
<b>PNKH</b> pink party	<b>TURH</b> turquoise	<b>WHIH</b> white

style features:

- two welt pockets
- high-low hemline



### hs687 gogv

garden of groove

sizes: XS-3XL  
length: 26"

fabric: 95 poly/  
5 spandex fine  
dobby



coordinating colors:

<b>NAYH</b> navy	<b>BRBY</b> berry blast	<b>PNKH</b> pink party
<b>TURH</b> turquoise	<b>WHIH</b> white	

style features:

- two pockets plus instrument loop
- lace-up detail at neck
- contrast berry blast





## continuing prints



Model is wearing the HS831 LVHP top and HS185 pant in RBGR.

### hs831 lvhp

loving hope

sizes: XXS-3XL  
length: 26"

fabric: 95 poly/  
5 spandex poplin

coordinating colors:



style features:

- breast cancer awareness ribbons
- black rib-knit neckband
- black and white shoulder bands



### hs610 sosh

snowflake  
shimmer

sizes: XS-3XL  
length: 26"

fabric: 95 poly/  
5 spandex fine  
dobby

coordinating colors:



style features:

- contemporary fit
- two patch pockets







Model is wearing the HS719 DMGG top and HS185 pant in WINH with the stand strong soul support sock.



## continuing prints



### hs719 dmgg

stronger together

sizes: XS-3XL  
length: 26"

fabric: 95 poly/  
5 spandex fine  
dobby



coordinating colors:

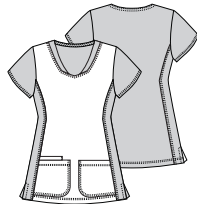


style features:

- co-branded DC & heartsoul artwork features strong female Super Heroes Supergirl, Batgirl & Wonder Woman
- pewter contrast



JUSTICE LEAGUE and all related characters and elements © & TM DC. (s21)



### hs638 ddf1

dip dye floral

sizes: XS-3XL  
length: 26"

fabric: 95 poly/  
5 spandex poplin



coordinating colors:



style features:

- ombre tie-dye floral border print
- two welt pockets



### hs686 dyde

daisy dreamer

sizes: XS-3XL  
length: 26"

fabric: 95 poly/  
5 spandex fine  
dobby

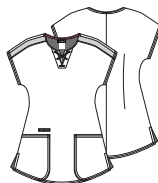


coordinating colors:



style features:

- ditsy floral print contrast
- two pockets plus instrument loop
- lace-up detail at neck



### hs877 cfck

colorful check

sizes: XS-3XL  
length: 26"

fabric: 95 poly/  
5 spandex fine  
dobby



coordinating colors:



style features:

- black contrast
- two in-pockets







Model is wearing the HS831 LVHP top and HS185 pant in RBGR, and the love and flowers crew sock. Shown with Bella Backpack in BLKCA.



# bags

## bella backpack

size: 12-18½"x15"x6"  
 fabric: 100 nylon  
 lining: 100 poly



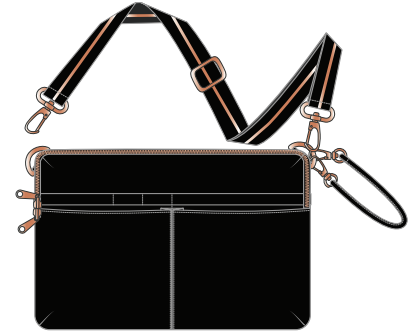
<b>BLKGM</b> black	<b>HTGRY</b> heather grey	<b>BLKCA</b> camo texture
gun metal hardware	black strap	gun metal hardware

### style features:

- converts easily to shoulder bag with adjustable, detachable strap and two top tote handles
- durable, lightweight, easy-care, water-resistant outer fabric
- two front zippered slip pockets plus zippered utility pocket with multiple compartments, instrument loops and mesh zip pocket
- expandable side pockets for water bottle
- wide opening, spacious interior with three pockets including padded tech pocket
- black straps, rose gold hardware

## harper utility medical bag

size: 9.5"x6.75"x.75"  
 fabric: BLKGM: 100 nylon  
 HTGRY & RBLOV: 100 poly  
 lining on all: 100 poly



<b>BLKGM</b> black	<b>HTGRY</b> heather grey	<b>RBLOV</b> rainbow love
gun metal hardware	black strap	gun metal hardware

### style features:

- multi-wear medical bag converts easily from crossbody to shoulder bag to belt bag with adjustable utility strap
- durable, lightweight, easy-care, water-resistant outer fabric
- removable elasticized loop for medical tape
- multi-pockets and instrument loops
- secure inside zip pocket
- velcro instrument strap
- back slip pocket

## madison duffel

size: 14½-20½"x12"x5½"  
 fabric: 100 nylon  
 lining: 100 poly



<b>BLKGM</b> black	<b>HTGRY</b> heather grey	<b>BLKPE</b> black pebble texture
gun metal hardware	black strap	gun metal hardware

### style features:

- multi-pocket duffel with adjustable, detachable shoulder strap and two top tote handles
- durable, lightweight, easy-care, water-resistant outer fabric
- spacious interior with water bottle pocket, zip pocket, padded tech pocket and instrument loops
- wide opening and three outside slip pockets
- drawstring shoe bag and removable cosmetic pouch
- black straps, gunmetal hardware



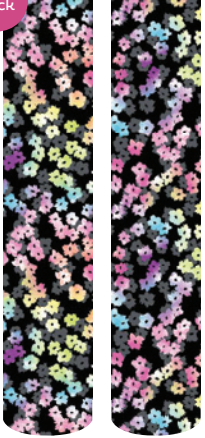
Model is wearing the HS719 DMGG top and HS185 pant in WINH. Shown with Madison Duffel in BLKPE.

## socks - soul support

1 pair pack, one size  
8-15 mmHg compression

fabric: 80 combed cotton/  
15 nylon/5 spandex

new  
sock



rwbm  
rainbow blossoms



dmsts  
stand strong



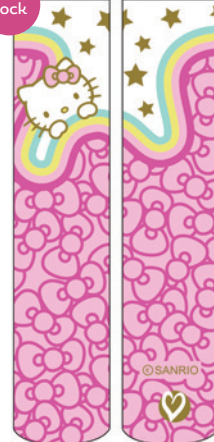
JUSTICE LEAGUE and all  
related characters and  
elements © &™ DC. (s21)

## socks - heart support

1 pair pack, reg up to 17" calf,  
wide 17-22" calf  
8-12 mmHg compression

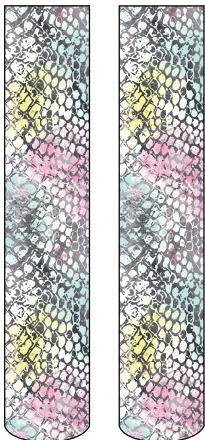
fabric: 80 combed cotton/  
15 nylon/5 spandex

new  
sock



© 2022 SANRIO CO., LTD.  
Used Under License.

hkhrb  
hello rainbow



sths  
sweet hisses



mnvbs  
minnie vibes



©Disney



dilf  
dia de las flores



dmtD  
dimensional tie dye





## socks - crew love (ast)

1/3 pair pack, one size

fabric: 80 combed cotton/  
15 nylon/5 spandex



lvtd  
loving tie dye



lvflr  
love and flowers



rnbpp  
rainbow pop



## socks - show me not (ast)

1/5 pair pack, one size

fabric: 80 combed cotton/  
15 nylon/5 spandex



grgrv  
garden groove



driving me daisy



unicorn magic



dsydr  
daisy dreamer



mrmvb  
mermaid vibes

# size chart

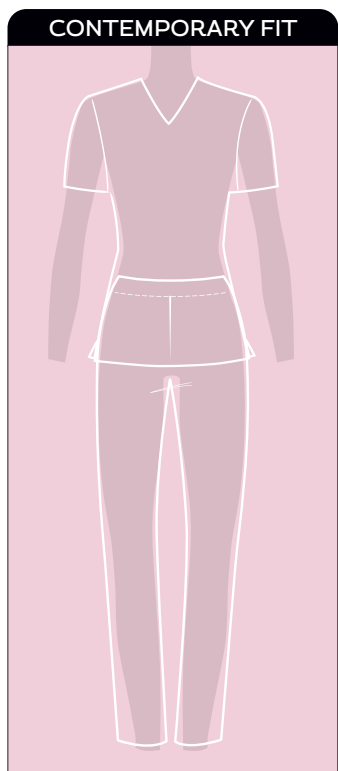
	Size	Bust	Waist	Hips
XXS	0	31-32	23-24	33-34
XS	2-4	33-34	25-26	35-36
S	6-8	35-36	27-28	37-38
M	10-12	37-39	29-31	39-41
L	14-16	40-43	32-35	42-45
XL	18-20	44-47	36-39	46-49
2XL	22-24	48-51	40-43	50-53
3XL	26-28	52-55	44-47	54-57
4XL	30-32	56-59	48-51	58-61
5XL	34-36	60-63	52-55	62-65

Inseam\*: Regular: 30½"    Petite: 28"    Tall: 33½"

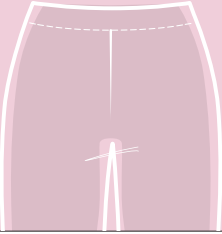
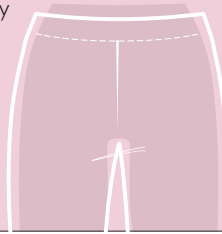
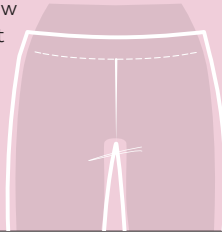
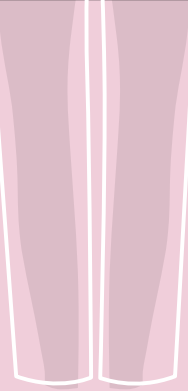
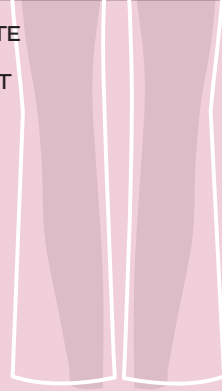

Use this chart to determine your size. If one of your measurements is borderline between two sizes, order the smaller size for a tighter fit or the larger size for a looser fit. If your measurements for hips and waist correspond to two different suggested sizes, order the one indicated by your hip measurement.  
 \* Inseams may vary according to garment.



# garment fit guide



WAIST & LEG FIT GUIDE

<p><b>NATURAL</b> Sits at the waist or slightly above</p> 	<p><b>MID RISE</b> Sits slightly below the waist</p> 	<p><b>LOW RISE</b> Sits below the waist</p> 
<p><b>STRAIGHT</b> Falls straight from the knee to the leg opening</p> 	<p><b>MODERATE FLARE</b> <b>BOOT CUT</b> Widens slightly from the knee to the leg opening</p> 	<p><b>FLARE</b> Flares from the knee to the leg opening</p> 



## print index

CFCK	colorful check	19
DDFL	dip dye floral	19
DYDE	daisy dreamer	19
<b>FWAH</b>	<b>forever wild at heart</b>	<b>15</b>
<b>GOGV</b>	<b>garden of groove</b>	<b>16</b>
<b>HKIV</b>	<b>kawaii vacation</b>	<b>14</b>
DMGG	stronger together	19
<b>RWBM</b>	<b>rainbow blossoms</b>	<b>16</b>
<b>HKRW</b>	<b>retro rainbow</b>	<b>14</b>
LVHP	loving hope	17
<b>LVTD</b>	<b>loving tie dye</b>	<b>16</b>
PKPD	pink party polka dot	7, 10
<b>PLPP</b>	<b>pineapple pop</b>	<b>16</b>
SOSH	snowflake shimmer	17

## footwear index

<b>rainbow blossoms</b>	<b>22</b>
<b>hello rainbow</b>	<b>22</b>
minnie vibes	22
sweet hisses	22
dimensional tie dye	22
dia de las flores	22
stand strong	22
<b>loving tie dye</b>	<b>23</b>
love and flowers	23
rainbow pop	23
<b>garden of groove</b>	<b>23</b>
daisy dreamer	23
mermaid vibes	23
driving me daisy	23
unicorn magic	23

## style index

20110/P/T	SOLID	11, 27
20310	SOLID	13, 26
20402	SOLID	13, 26
20710	SOLID	5, 26
hs020/P/T	SOLID	11, 27
hs030/P/T	SOLID	11, 27
hs185/P	SOLID	5, 27
<b>hs215</b>	<b>SOLID</b>	<b>7, 27</b>
hs228	SOLID	9, 27
hs315	SOLID	13, 26
<b>hs329</b>	<b>FWAH</b>	<b>15</b>
hs336	SOLID	9, 26
<b>hs380</b>	<b>PKPD</b>	<b>7, 27</b>
hs500	SOLID	13, 26
hs610	SOSH	17
hs638	DDFL	19
<b>hs643</b>	<b>LVTD</b>	<b>16</b>
hs660	SOLID	10, 26
hs672	PKPD	10, 26
hs686	DYDE	19
<b>hs687</b>	<b>GOGV</b>	<b>16</b>
hs710	SOLID	10, 26
<b>hs714</b>	<b>HKIV</b>	<b>14</b>
hs719	DMGG	19
<b>hs720</b>	<b>RWBM</b>	<b>16</b>
hs765	SOLID	10, 26
<b>hs797</b>	<b>SOLID</b>	<b>7, 26</b>
<b>hs800</b>	<b>FWAH</b>	<b>15</b>
<b>hs815</b>	<b>SOLID</b>	<b>7, 27</b>
<b>hs821</b>	<b>HKRW/PLPP</b>	<b>14, 16</b>
hs828	SOLID	9, 26
hs831	LVHP	17
hs877	CFCK	19

## color abbreviations

BCKH	Black
NAYH	Navy
PEWH	Pewter
ROYH	Royal
WINH	Wine
CILH	Ciel
WHIH	White
CABH	Caribbean Blue
TEAH	Teal Blue
RDHH	Red
EGPH	Eggplant
GLXH	Galaxy Blue
HUNH	Hunter
PNKH	Pink Party
TURH	Turquoise
GRP	Grape
GRXH	Grey
GLFH	Glam Fuchsia
ESP	Espresso
RBGR	Ruby Grapefruit
BRYH	Berry Blast
HTGR	Heather Grey

All styles and colors featured are listed in order of popularity and are REORDERABLE, unless otherwise indicated. Center back lengths are listed in parentheses.

tops



20710  
shaped v-neck top  
XXS-3XL (25½")



HS660  
v-neck top  
XXS-3XL (26½")



HS710  
shaped v-neck top  
XXS-3XL (26")



HS765  
split neck top  
XXS-3XL (26")



HS828  
zip-front top  
XS-3XL (25")



**new** HS797  
v-neck top  
XXS-3XL (26")

Black (BCKH)						
Navy (NAYH)					not available	
Pewter (PEWH)						
Royal (ROYH)					not available	
Wine (WINH)		not available		not available	not available	
Ciel (CILH)		not available		not available	not available	
White (WHIH)		not available		not available	not available	not available
Caribbean Blue (CABH)		not available		not available	not available	not available
Teal Blue (TEAH)		not available	not available	not available	not available	not available
Red (RDHH)		not available	not available	not available	not available	not available
Eggplant (EGPH)		not available	not available	not available	not available	not available
Galaxy Blue (GLXH)		not available	not available	not available	not available	not available
Hunter (HUNH)		not available	not available	not available	not available	not available
Pink Party (PNKH)		not available		not available	not available	not available
Turquoise (TURH)		not available	not available	not available	not available	not available
Grape (GRP)		not available	not available	not available	not available	not available
Grey (GRXH)		not available	not available	not available	not available	not available
Glam Fuchsia (GLFH)		not available	not available	not available	not available	not available
Espresso (ESP)		not available	not available	not available	not available	not available
Ruby Grapefruit (RBGR)	XS-3XL	not available	not available	not available	not available	not available
Berry Blast (BRYH)	XS-3XL	not available	not available	not available	not available	not available

jackets & outerwear



20310  
warm-up jacket  
XS-3XL (24½")



HS315  
warm-up jacket  
XS-3XL (27")



HS500  
vest  
XS-3XL (25")



20402  
lab coat  
XS-2XL (34")



HS336  
peplum cardigan  
XS-2XL (25½")

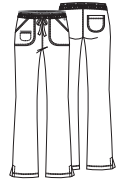
Black (BCKH)				not available	
Navy (NAYH)				not available	
Pewter (PEWH)				not available	not available
Royal (ROYH)		not available	not available	not available	not available
Wine (WINH)		not available	not available	not available	not available
Ciel (CILH)		not available	not available	not available	not available
White (WHIH)		not available			not available
Caribbean Blue (CABH)		not available	not available	not available	not available
Teal Blue (TEAH)		not available	not available	not available	not available
Red (RDHH)		not available	not available	not available	not available
Galaxy Blue (GLXH)		not available	not available	not available	not available
Hunter (HUNH)		not available	not available	not available	not available
Pink Party (PNKH)		not available	not available	not available	not available



# matrixes

All styles and colors featured are listed in order of popularity and are **REORDERABLE**, unless otherwise indicated. Center back lengths and inseams are listed in parentheses.

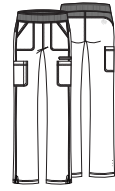
## pants



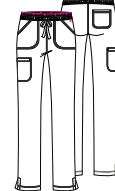
**20110/P/T**  
low rise  
drawstring pant  
XXS-3XL (30½")  
[P] XXS-2XL (28")  
[T] XS-2XL (33½")



**HS030/P/T**  
low rise jogger pant  
XXS-3XL (29")  
[P] XXS-XL (26½")  
[T] XS-XL (32")



**HS020/P/T**  
low rise pull-on  
cargo pant  
XXS-3XL (30½")  
[P] XXS-2XL (28")  
[T] XS-2XL (33½")



**HS185/P/T**  
mid rise  
drawstring pant  
XXS-3XL (30½")  
[P] XXS-2XL (28")  
[T] XS-2XL (33½")



**HS228**  
mid rise  
pull-on pant  
XS-3XL (31")

Black (BCKH)					
Navy (NAYH)					not available
Pewter (PEWH)					
Royal (ROYH)					not available
Wine (WINH)			not available		not available
Ciel (CILH)			not available	not available	not available
White (WHIH)		not available	not available		
Caribbean Blue (CABH)			not available		not available
Teal Blue (TEAH)			not available	not available	not available
Red (RDHH)			not available	not available	not available
Eggplant (EGPH)			not available	not available	not available
Galaxy Blue (GLXH)			not available		not available
Hunter (HUNH)		not available	not available	not available	not available
Pink Party (PNRH)		not available	not available	not available	not available
Turquoise (TURH)		not available	not available	not available	not available
Grape (GRP)		not available	not available	not available	not available
Grey (GRXH)		not available	not available	not available	not available
Glam Fuchsia (GLFH)		not available	not available	not available	not available
Espresso (ESP)		not available	not available	not available	not available
Ruby Grapefruit (RBGR)	not available	not available	not available	F XS-3XL, [P] XS-2XL, No Tall	not available
Berry Blast (BRYH)	not available	not available	not available	F XS-3XL, [P] XS-2XL, No Tall	not available

## pink party polka dot/heather grey collection



**HS672**  
knit tee  
XS-2XL (25")



**new** **HS815**  
zip y-neck top  
XS-3XL (25")



**new** **HS215**  
mid rise straight leg  
pull-on pant  
XS-3XL (30½")



**new** **HS380**  
peplum cardigan  
XS-3XL (25½")

Heather Grey (HGRY)	not available			not available
Pink Party Polka Dot		not available	not available	

F Fashion color (available while supplies last)

new New color or style

# heartsoul

Customer Care: 800.283.7272  
M-F, 6 am to 4 pm PST  
Fax: 888.283.7271  
Email: [orderinginquiry@careismatic.com](mailto:orderinginquiry@careismatic.com)  
Order on CBI Central: [cbicentral.com](http://cbicentral.com)

Need digital assets? Email us at  
[digitalassets@careismatic.com](mailto:digitalassets@careismatic.com)

Careismatic Brands  
9800 De Soto Ave, Chatsworth, CA 91311

[heartsoulscrubs.com](http://heartsoulscrubs.com)



@heartsoulscrubs